



ALARIS
ANTENNAS

GAIN THE ADVANTAGE

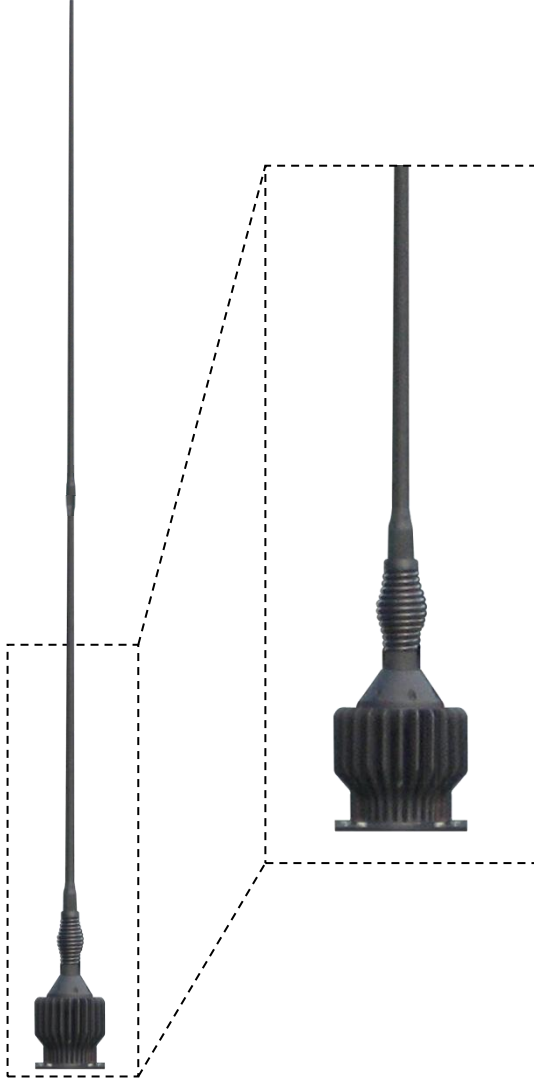
High-Power Wideband VHF Whip

20 – 100 MHz

Product Code: MONO-A0062

VERSION: 2.7

SPECIFICATIONS:



| | | |
|---|------------------------|---|
| Product code: | | |
| MONO-A0062 | | Standard whip length |
| MONO-A0062-01 | | Low profile version |
| MONO-A0062-02 | | Standard whip length with higher VSWR and gain |
| MONO-A0062-03 | | Standard whip length, 4.3-10 connector |
| Electrical: | | |
| Frequency range | | 20 – 100 MHz |
| VSWR: | | < 2.5:1 |
| MONO-A0062 / -01 / -03 | | See Figure 1 |
| VSWR: | | < 3.5:1 |
| MONO-A0062-02 | | See Figure 3 |
| Feed power handling | | 120 W |
| Gain | MONO-A0062 / -03 | > -12 dBi. See Figure 2 |
| | MONO-A0062-01 | Deteriorates app. by 3 dB at low frequency compared to the standard MONO-A0062 gain |
| | MONO-A0062-02 | > -8 dBi, see Figure 4 |
| Elevation 3 dB beamwidth | | 60° (± 10°) |
| Nominal input impedance | | 50 Ω |
| Polarisation | | Vertical |
| Connector | MONO-A0062 / -01 / -02 | N-type female |
| | MONO-A0062-03 | 4.3-10 female |
| Groundplane requirements | | Groundplane dependent, Minimum 2000 mm x 2000 mm recommended |
| Mechanical: | | |
| Length | MONO-A0062 / -02 / -03 | 2340 mm |
| | MONO-A0062-01 | 1605 mm |
| Base diameter | | 135 mm |
| Weight | | 3.5 kg |
| Mounting base | | NATO flange 4 and 6 holes |
| Environmental: designed to meet the following specifications | | |
| Wind loading | | 160 km/h |
| Temperature (operational) | | - 30 °C to + 65 °C (no icing) |
| Shock | | 20 G at 10 msec |
| Thermal shock | | - 20 °C to +70 °C: 10 cycles |
| Water ingress rating | | IP65 (NEMA 4X) |

FEATURES:

- Wide frequency coverage (20 to 100 MHz)
- High-power, 120 W at 100% duty cycle
- Excellent VSWR
- Omni-directional azimuth pattern
- Rugged and hard-wearing
- Suited to low-profile applications

APPLICATIONS:

- Improvised explosive device (IED) suppression
- Communications interception

PRODUCT DESCRIPTION:

The antenna has an excellent radiation pattern and a consistently low VSWR across the entire frequency band. It can handle full rated power continuously at all frequencies, making it ideal for all 100% duty-cycle applications. The insulated radiator is robust, hard-wearing and impervious to fuel, oil and hydraulic fluid.

The MONO-A0062-01 is a low profile version of MONO-A0062 and is ideal for certain vehicles; however, it suffers from gain degradation at low frequency.

The MONO-A0062-02 has been optimized for higher gain at a cost of an increased maximum VSWR.

High-Power Wideband VHF Whip

20 – 100 MHz

Product Code: MONO-A0062

VERSION: 2.7

MONO-A0062 graphs*:

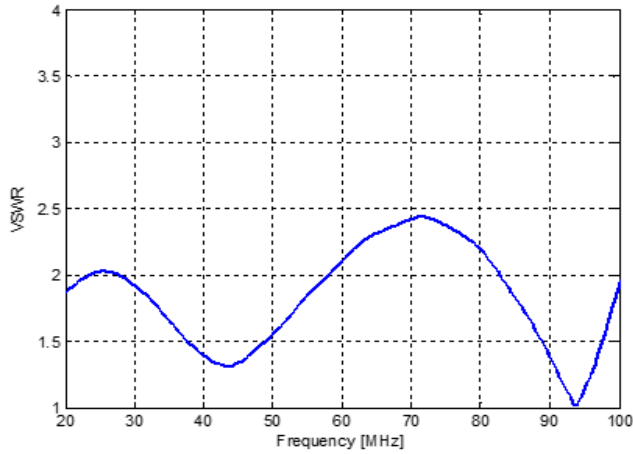


Figure 1: VSWR

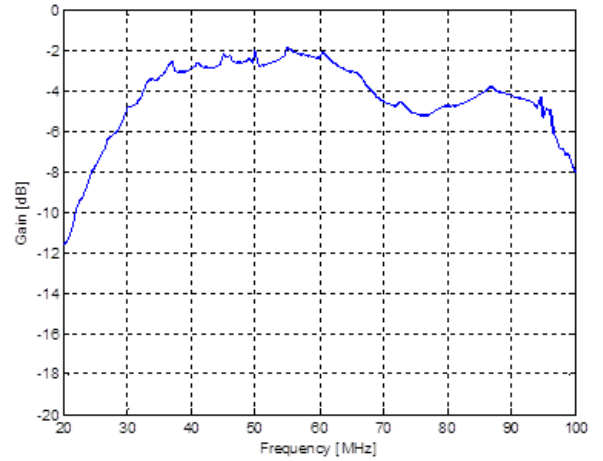


Figure 2: gain

* Measured on a 5000 mm x 5000 mm groundplane.

MONO-A0062-02 graphs:

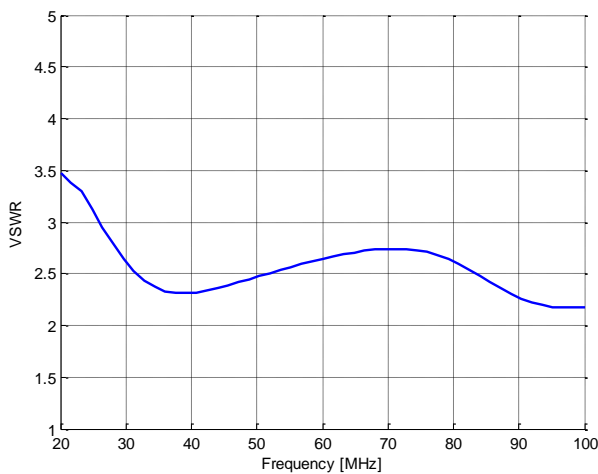


Figure 3: VSWR

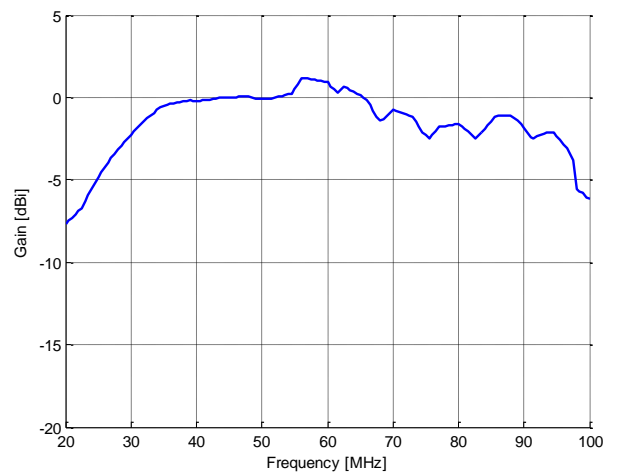


Figure 4: gain

High-Power Wideband VHF Whip

20 – 100 MHz

Product Code: MONO-A0062

VERSION: 2.7

Elevation:

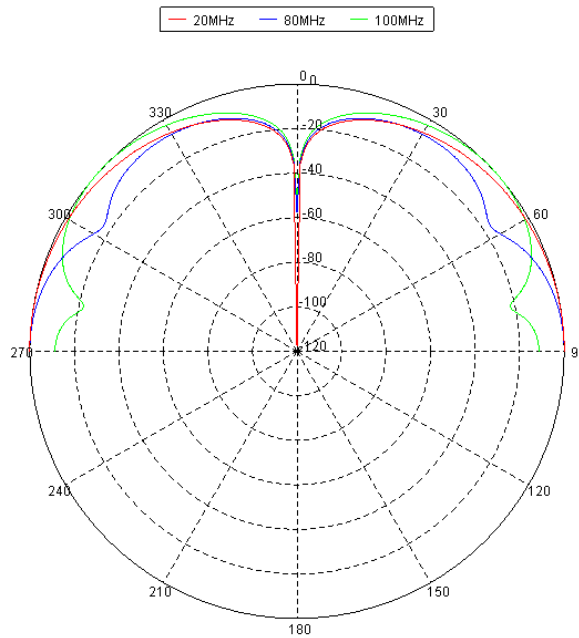


Figure 5: elevation pattern